



**Bohle Vigo**  
Walk-In Shower

# Simply walk through: The Vigo walk-in shower

Whether open to the front and fixed to the wall or detached and accessible from both sides: The Vigo walk-in shower does without a reinforcement bar. As a passage open to one or both sides, the shower is an elegant solution for a barrier-free bathroom. The stainless steel profiles stand out thanks to their minimalistic design for the greatest possible transparency. The glass pane is inserted into the profile, no glass cut-outs or bore holes are required.

The shower wall can be adjusted to suit requirements, the maximum possible ceiling height is 2800 mm with a glass height of 2200 mm. This guarantees the greatest possible flexibility when designing a bathroom.



## Product highlights:

- ✓ Modern and elegant – the shower cubicle of the future
- ✓ Barrier-free – easy access, suitable for wheelchair users
- ✓ Robust – reliable stability
- ✓ Safe – protected glass edges
- ✓ Simple – plug-in glass installation
- ✓ Minimal glass processing – no cut-outs required
- ✓ Flexible – can be cut to size
- ✓ Multifunctional – partition wall for any area

## ▶ Bohle Vigo - Walk-In Shower

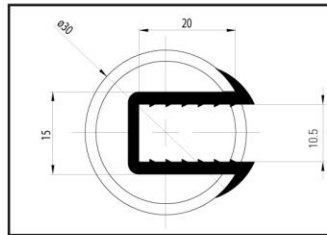
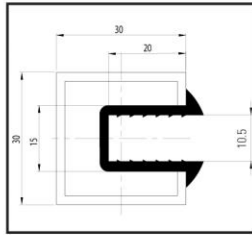


Material: stainless steel (AISI 1.304) · Glass type: tempered glass  
8 - 10 mm · Length: can be trimmed to size 2800 mm · Glass height: max. 2200 mm

Included in delivery:

- 1x Stainless steel profile incl. mounting accessories
- Rubber profile for 8 and 10 mm

Art. no.	Design · Finish · Dimensions
BO 5215435	Square · matt brushed · 30 x 30 mm
BO 5215436	Square · polished · 30 x 30 mm
BO 5215437	Round · matt brushed · $\varnothing$ 30 mm
BO 5215438	Round · polished · $\varnothing$ 30 mm



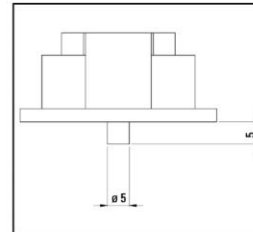
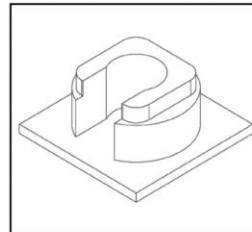
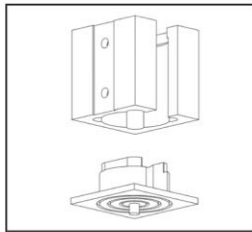
## ▶ Bohle Vigo Bonding Plate square



Bonding plate for screwless floor mounting • with corrugated bottom surface for optimum distribution of the adhesive • only one stabilising bore hole in the floor needed

Material stainless steel AISI 304 · Shape square

Art. no.	Finish
BO 5215700	matt brushed
BO 5215701	polished



## ▶ Bohle Vigo Bonding Plate round



Bonding plate for screwless floor mounting • with corrugated bottom surface for optimum distribution of the adhesive • only one stabilising bore hole in the floor needed

Material stainless steel AISI 304 · Shape round

Art. no.	Finish
BO 5215702	matt brushed
BO 5215703	polished

