

A white letter 'Q' inside a dark blue square.The CE mark, consisting of the letters 'C' and 'E' inside a square border.A long, bright office hallway with a wooden floor, white walls, and a glass railing. A large skylight runs along the ceiling. There are potted plants on the left and framed pictures on the right wall.

EASY GLASS[®] SMART

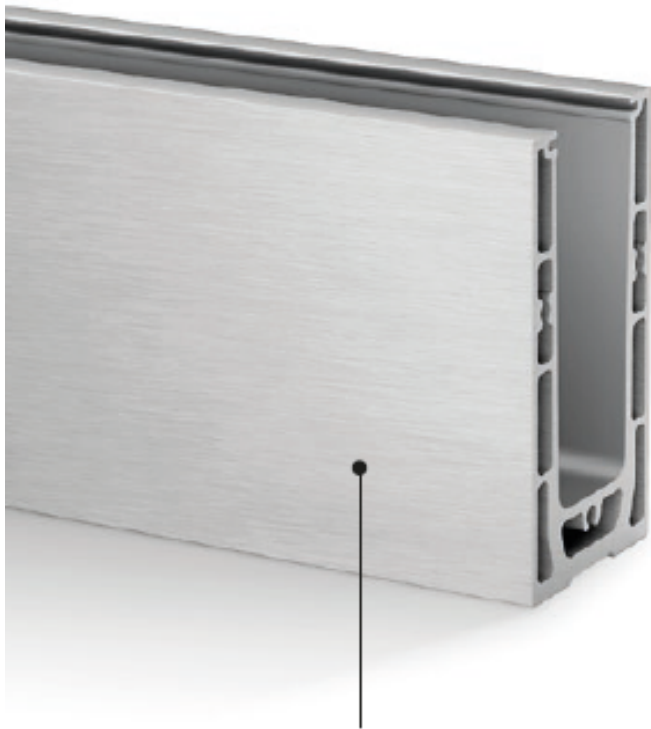
SET A SPEED RECORD



Unbeatable ease of installation

Easy Glass® Smart is a glass railing revolution. Complicated anchoring systems are a thing of the past. With a host of innovative features, including the Q-disc® System for glass mounting, Easy Glass® Smart lets you carry out installation or removal in a quick, intuitive and controlled fashion. In fact, those jobs can be finished faster than with any other quality glass railing. And it's just one way this highly economical system will save you money.

- Symmetrical top-mount base shoe
- Light and medium use railings for indoor and outdoor settings
- Minimal use of anchors in base shoe installation
- A choice of fixing methods: hexagon bolts, mechanical anchors or stud anchors
- Easy to work on with the tools supplied
- Optional aluminium shoe shims available for levelling uneven surfaces



Incorporates the Q-disc System. Turn to page 40 to find out all about this groundbreaking new approach to securing glass infills.

Easy Glass® Smart	UK	DE	NL	IT	CH	ES	FR
Max. line load (kN/m)	0,74	1,0	1,0	2,0	1,6	3,0	1,0

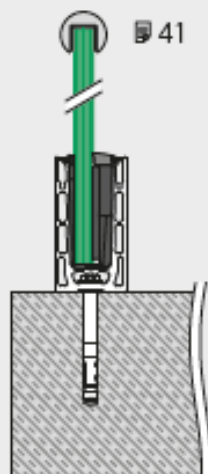
Please refer to the respective certificates for specifications such as mounting details and glass dimensions. For more information, please visit our website: www.q-railing.com/certificates



EASY GLASS® SMART VARIANTS

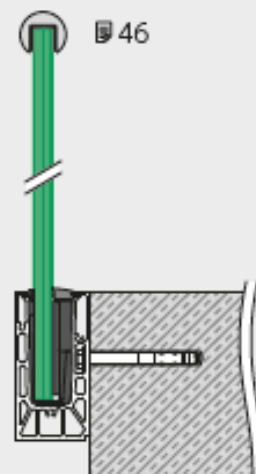
Smart Top mount

- Also for in-floor mounting (protective layer needs to be applied)



Smart Fascia mount

- Optional base shoe cladding



- Also allows inverse mounting
- For parapet walls
- Optional base shoe cladding

